



Mino B

PRODUCT BROCHURE



Follow us on social media

Tromox Technology Co., Ltd

✉ info@tromox.com

🖱 www.tromox.com

☎ +86-571-88556818

RM 901, BLDG 8, China AI Town, Wenyi West Road, Hangzhou, China



Catalogue

About Us	03
Appearance & Design	08
Core Technology	16
Smart Technologies	22
Design Details	30
Colour Scheme & Configuration	35
Peripheral Products	38



About Us

Hangzhou Tromox Technology Co., Ltd. is a high-tech enterprise focusing on creating an intelligent e-mobility ecology.

With independent R&D of the core technology, Tromox adheres to the green way of mobility. By adopting trendy design, we create intelligent electric motorcycles and travel peripheral products, to provide Tromox users with a passionate lifestyle.

Brand Introduction

Tromox aims to create a [Technology + Trendy Play] electric motorcycles brand. Riding is not only to reach a certain destination, but to break through the shackles of boring life and to activate the self-awareness.

Original European design + independent R&D of core technologies provide an interesting, intelligent, and environment-friendly travel experience for our global young riders. Unlimited usage scenarios create a unique playful way for them to show the youthful passion, free the mind, and release the stress.

① Brand Slogan

Born for cool riding

② Brand Core Value



Revolution



Interconnection



Passion

BRAND STORY

Dare to be a pathfinder to experience and explore:
live sincerely in the complex life ■
Dare to be an innovator to question and resist:
try my best without even being expected.
We are blessed to dwell in such an epoch,
which in return is more fortunate to embrace us.

Breaking through traditions and innovations ■
Balancing between reality and ideality ■
Blooming in collision and compromise:
Set yourself unlimited boundaries.



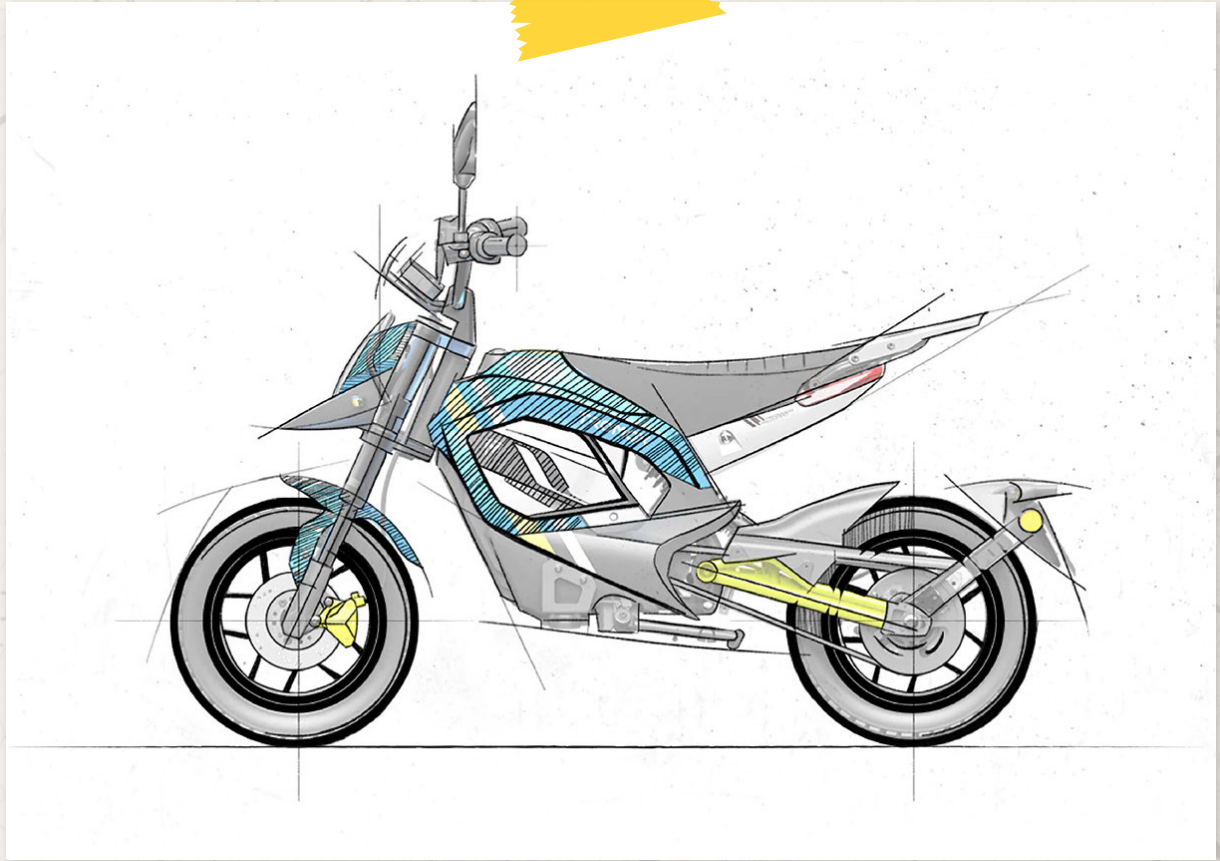


Minino B

Light Electric Motorcycle for Wild Fun
Pleasure beyond the road

It inherits the strengths of the Mino family: smart and portable with remarkable performance. All the details are exciting and mind-blowing.

The concept of "all terrain electric motorcycle" provides young outdoor riding enthusiasts with the opportunity meet their riding entertainment needs in a variety of road conditions.



Design Introduction

The design of MINO is carefully polished by Italian design team with a hummingbird style, gives it light weight, soft lines with rigidity.

It combines the sense of movement pursued by young people with a minimalist aesthetic. As a new option for urban travel.



Human-machine Interaction

Be comfortable, and be easy to handle



Ergonomic Design

With ergonomic design, Mino takes care of all our users to sit always comfortably and relaxed during the ride.



Male



Female



Male



Female

BACK TO RETRO





Go off-road,
is an expression
of personality.



Mino Serie Style Headlights

Tromox family style LED headlight balances low energy consumption with powerful lighting systems so that it has a high visibility on the road.

Personalized Handlebar

protection bars to the dashboard and headlight effectively protect the important parts.



**Ride Clean,
Ride Dirty.**



BMS System

Tromox BMS can provide eight protections for current, voltage, temperature and communication anomalies. Through icloud transmission, the battery data will be synchronized to the Tromox's App, so as to timely learn the battery status and plan future trips for users.



Battery Full Alert



Short-circuit protection



Overcurrent protection



Temperature protection



Over-discharge protection



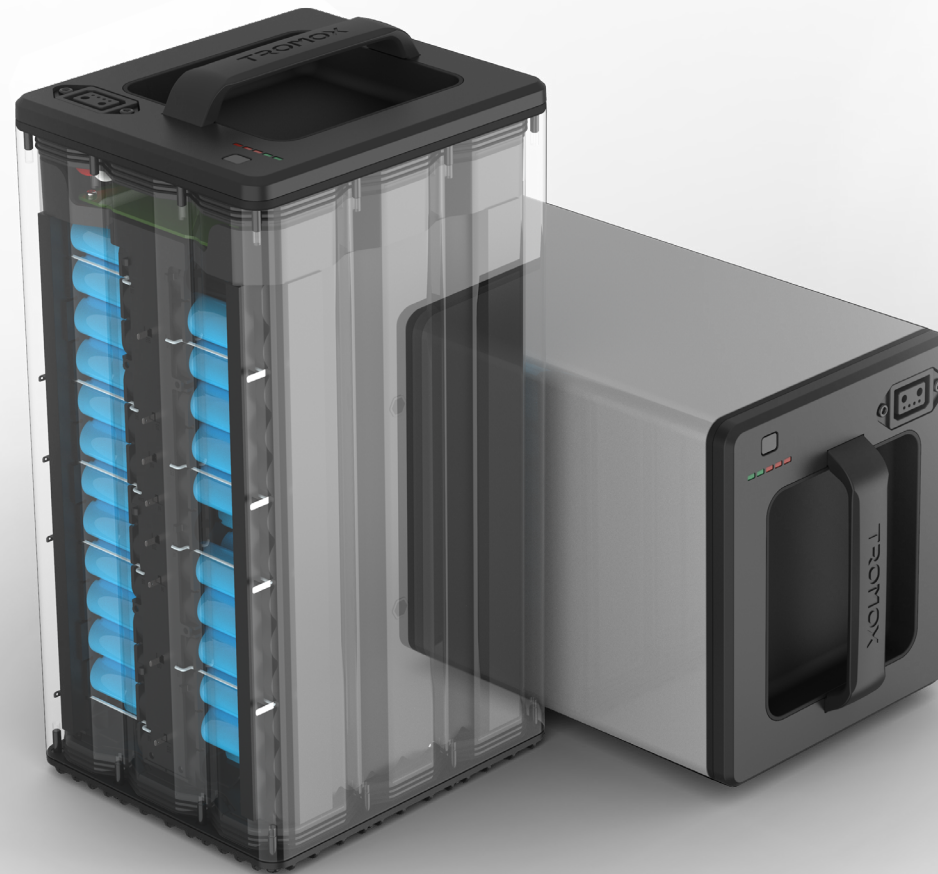
Cell equalization



MOS fault protection



Predischarge protection



Automotive Grade 18650 Lithium Battery

The battery has been tested through hundreds of cycles of discharge, which can last longer and help the vehicle run farther. The battery is made of a full aluminum alloy shell, high-pressure molding, and good thermal conductivity, giving tight protection to the battery core.

145^{km}

Top Speed

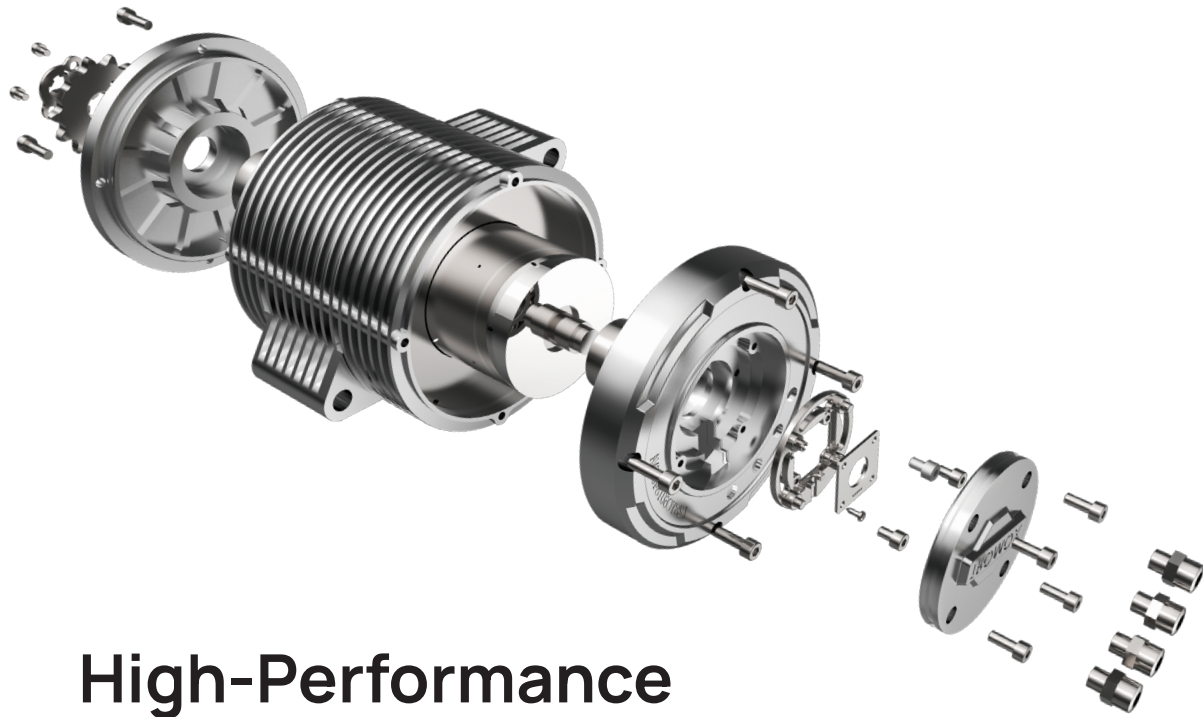
3.5^h

Climbing Ability

5^{years+}

Climbing Ability

* The value of autonomy may vary considerably depending on the test environment. The results are based on the actual data of the vehicle speed test at a constant speed of 30km/h, with a rider weighing 75kg, and an ambient temperature of 25 degrees.



High-Performance Mid-Mounted Motor

A new generation of power system developed specifically for riding fun, breaking through the design limitations of traditional wheel motors, maintaining the highest torque range output at low speeds, so as to make it easier to ride on steep slopes. The more off-road, the more cool.



2.5^{kW}

Peak Power



15°

Climbing Ability



96%

Energy Efficiency Conversion



10^s

100m Acceleration

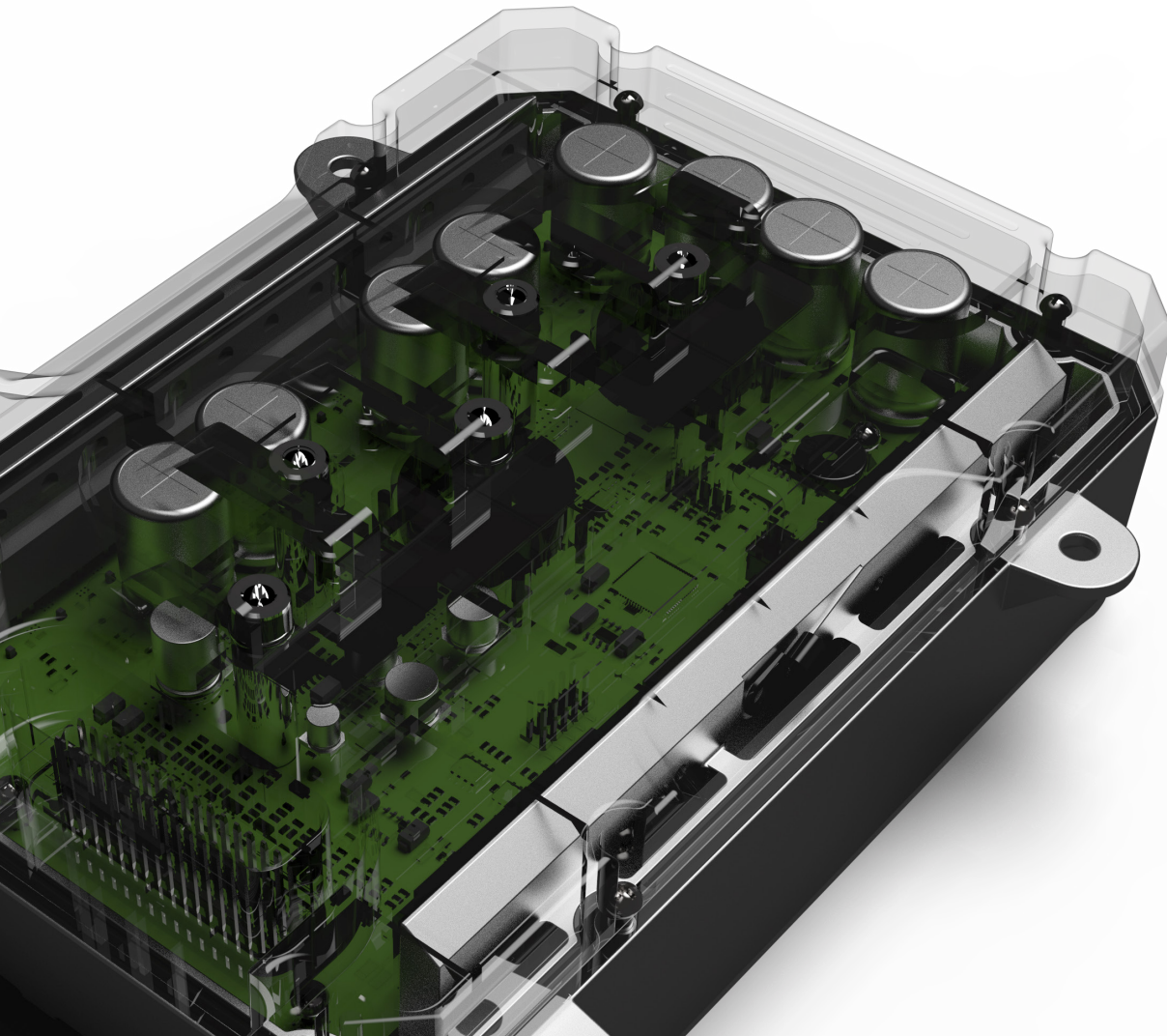
Independently R&D FOC Vector Controller

MINO's FOC vector controller increased the output power by 16%. With the high-precision control program, the performance potential of motor system is stimulated, and the whole vehicle power system is comprehensively upgraded. EBS brake energy recovery makes the range even longer.



Independently Developed Highly Integrated Central Control VCU

The vehicle body has more than 20 sensors, high precision, and sensitive response, making Mino a real intelligent machine, which enables multiple responses among the owner, the vehicle, and the data backend.



Exclusive Tromox APP

One vehicle, one security code can be bound to Tromox APP, which supports vehicle information query, riding news access, vehicle use guidance instructions, and other functions, bringing users more riding pleasure.



Cycling Record Tracking



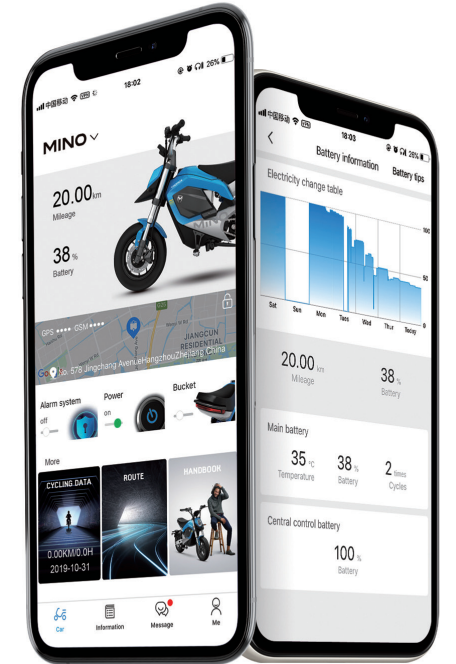
Cycling Habit Chasing



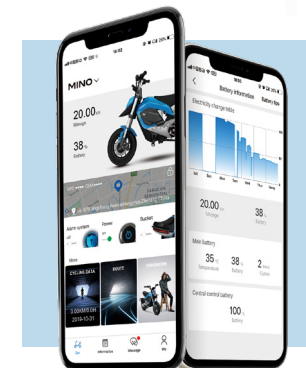
Estimation Of Vehicle Condition



Real-Time Location Tracking



Smart Key



IoT (Tromox APP)



One-button Start

Efficient Disc Brake Safety Braking System

The 180mm disc brakes of both front and rear wheels are equipped with new single-cylinder parallel calipers. Comparing with the floating calipers of the same specification, it greatly improves the braking performance of the whole vehicle.





Chase for fun,
is a potential.

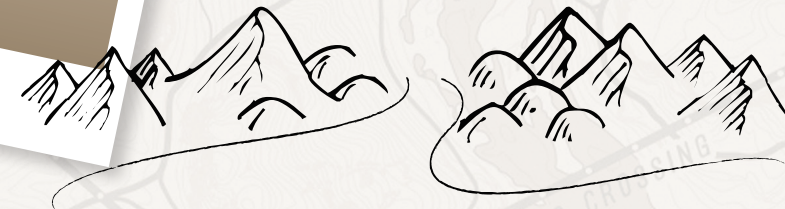
Invert Hydraulic Shock Absorber

The optimized invert hydraulic shock absorber assures the rider's stable driving on different road conditions. No fear to the bumpy road.



12 Inches Off Road Tyres

12inch off road tyres offer a strong grip and great performance in all terrain conditions



Specifications

Size (L×W×H)	1620mm×725mm×950mm	Wheel Base	1120mm
Net Weight	71kg	Loading Capacity	100kg
Transmission Mode	Chain Drive	Battery Voltage	60V31Ah/60V26Ah
Torque	110N·m	Brake System	Hydraulic Brake
Intelligent System	Optional	Shock Absorber	Front: Converted / Spring oil damped type Rear: Central / Spring oil damped type
Motor	Mid-drive motor	Tyre	Front: 90/80-12 Rear: 90/80-12
Battery	18650 Lithium	Max Speed	45km/h(EEC)
Climbing Capacity	15° (27/100)	Acceleration	10s(0~100m)
Range Per Charge	90km (30km/h,60V31ah)	Rated Power	1200w
Peak Power	2500w	Charge Time	6A/4.3h(60V26Ah)

Color



Youth Blue



Forest Green



Silver Grey



Accessories



- 1 Left side bag bracket
- 2 Headlight protection bar
- 3 Left side vehicle body protection bar
- 4 Stainless steel side case
- 5 Adjustable side stand
- 6 Parking handle
- 7 Vehicle body plug

